

PLUG IN HERE
PLAY @OFFSHORE

Ports of **NORMANDY**

Caen-Ouistreham // Cherbourg // Dieppe

CHERBOURG

DIEPPE

CAEN - OUISTREHAM

Who are we?

Owner of the ports of Caen-Ouistreham,
Cherbourg, Dieppe
A public entity managed by:



RESPONSIVENESS!

What do we do?



Manage and develop
property and assets



Guarantee safe
access for shipping



Define sustainable
development policy



Appoint the
contractors and
operators

A pioneering port for MRE

2014



Cherbourg: creation of a 15t/sqm bearing capacity quay

2015



Cherbourg: 39ha hardstanding area built to anticipate the needs of MRE industry

2021

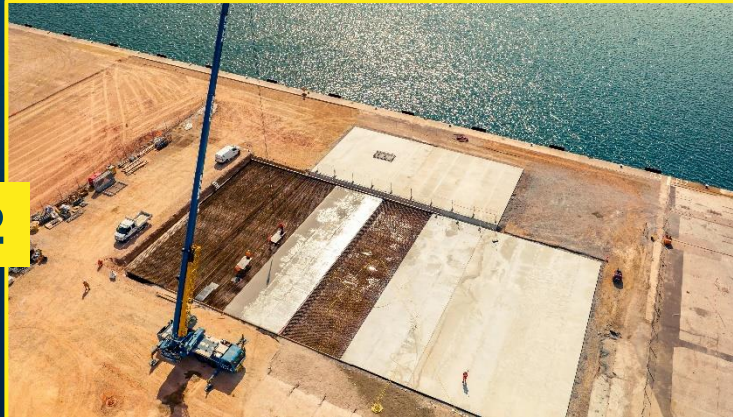


Caen-Ouistreham: creation of a maintenance facility for the Calvados offshore wind farm

2022



Cherbourg: fitting out an installation hub



Cherbourg: partial strengthening of the heavy load quay to 27&50t/sqm min

Continuously enhancing
infrastructure through
investment:

120M€

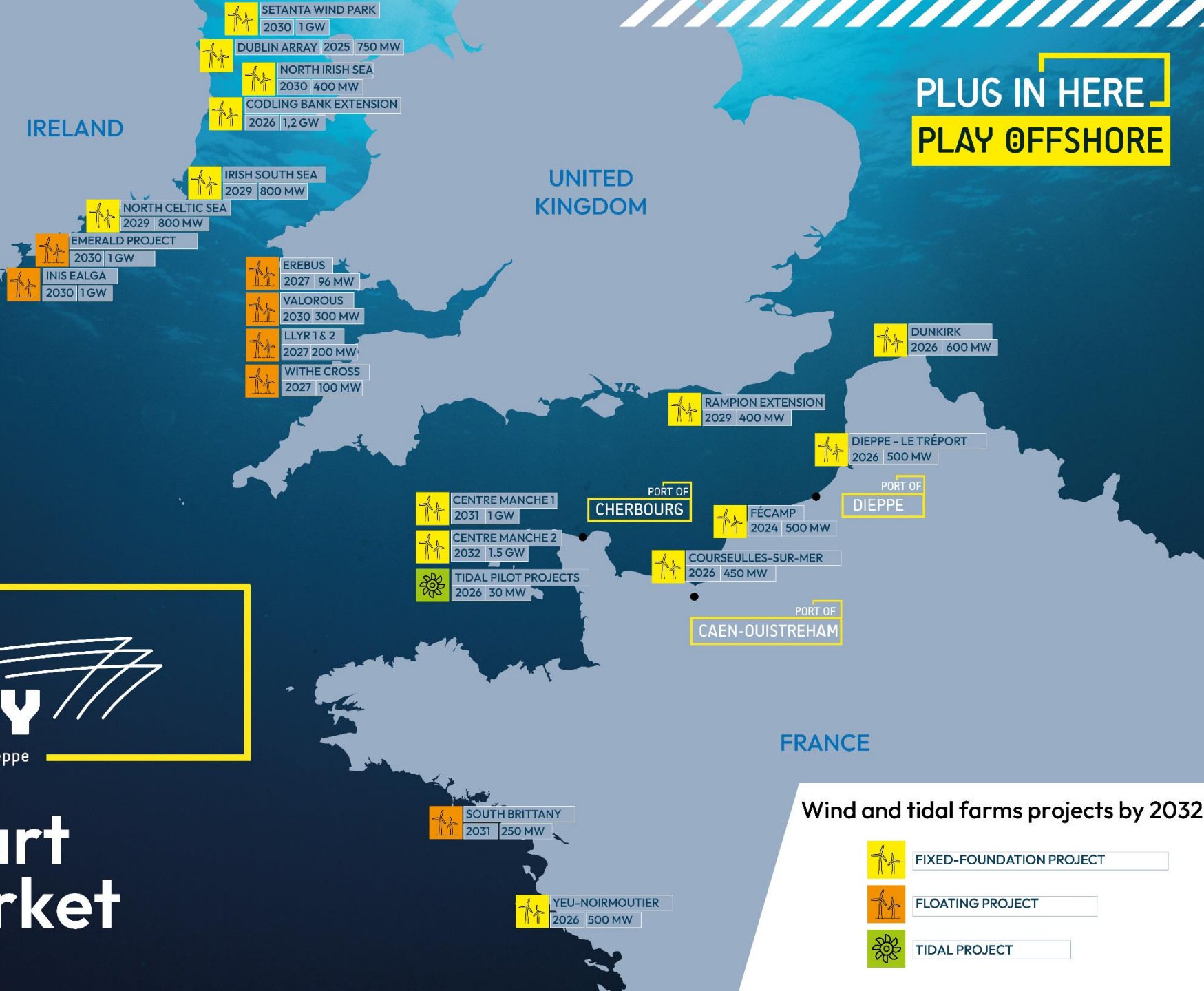
IN THE LAST 10 YEARS

**13 GW Offshore
windfarms projects**
under development on
the French, Ireland
and United Kingdom
coastlines by 2032

**Ports of
NORMANDY**

Caen-Ouistreham // Cherbourg // Dieppe

**At the heart
of the market**



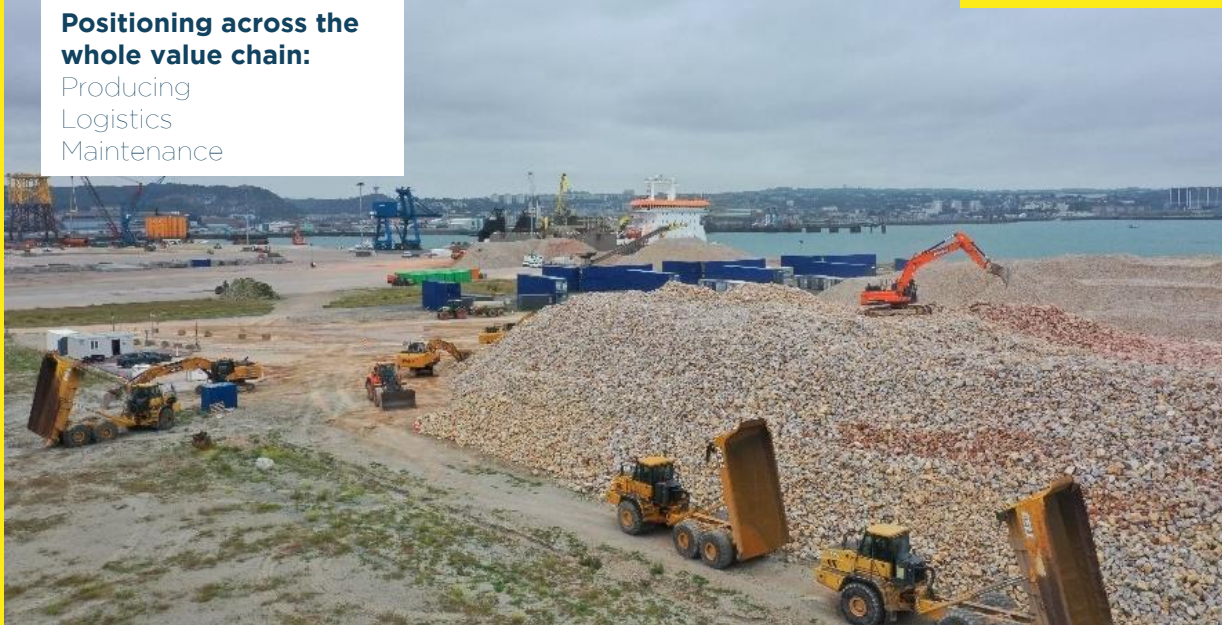


Multi-technology positioning:
bottom-fixed wind turbines
floating turbines
tidal current turbines

CHERBOURG

Positioning across the whole value chain:

Producing
Logistics
Maintenance



Created for MRE only!




**An exceptional harbour
with no constraints**



Channel depth: 11.7m min.

Access 24/7

Long and load-bearing docks



Quai des Flamands 1 & 2
360m
Depth 12.5m
Bearing capacity 5t/sqm

Quai des Flamands 3
220m
Depth 14.5m
Bearing capacity 15t/sqm
Reinforced from 27 to
50t/sqm

Quai des Flamands 4
100m
Depth 10m
Bearing capacity
15t/sqm

Quai des Mielles
200m
Depth 5m
Bearing capacity 3t/sqm

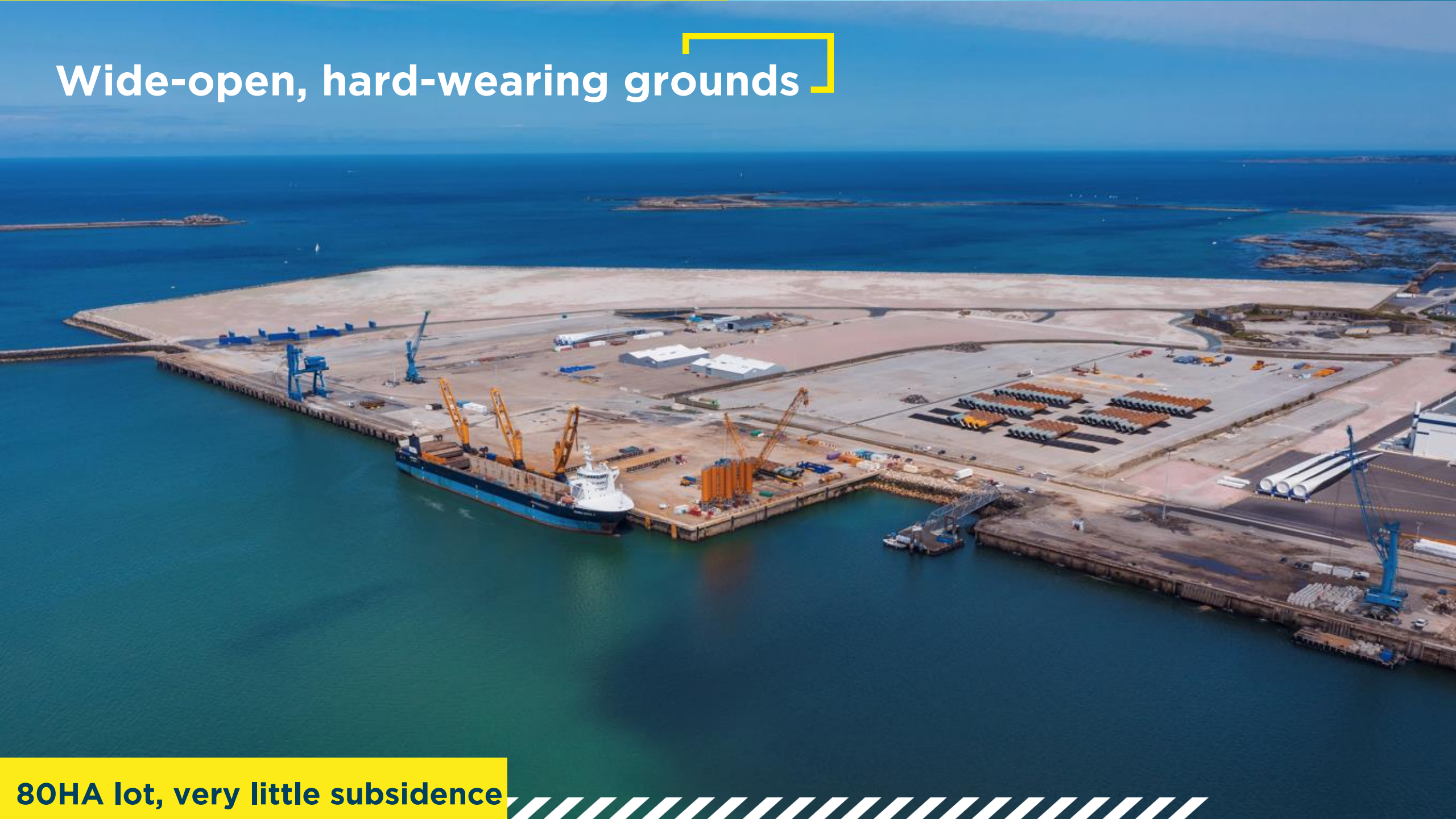
900m of conventional & heavy load quays!

Port seabed layout

Berthing pockets: 40m wide
Jacking-up possible along heavy-lift
quay up to 90t/sqm



Wide-open, hard-wearing grounds



80HA lot, very little subsidence

Large surface and underwater storage capacity

ANCHORAGE FOR 10 WIND TURBINE FLOATS

Distance from wharfs: less than 1
nautical mile
Depth: 6m

MOORING BUOYS FOR 2 WIND TURBINE FLOATS

Distance from wharfs: 2
nautical miles
Depth: 21m

ANCHORAGE FOR 5 WIND TURBINE FLOATS

Distance from wharfs:
less than 1 nautical mile
Depth: 12m

Moorings inside & outside the harbour

And now,
how can we contribute
to your success?

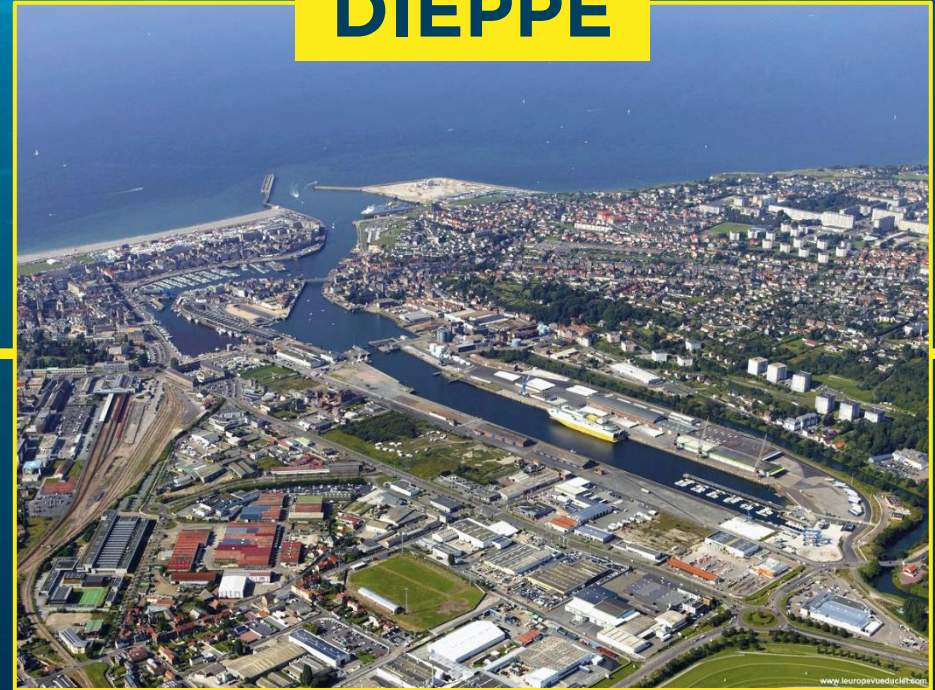


3 integrated ports: Cherbourg supported by Caen and Dieppe

CAEN - OUISTREHAM



DIEPPE



Easy: 3 ports, 1 contact!



The image is an aerial photograph of an industrial site. In the foreground, there are several large, dark-colored industrial buildings with yellow accents and corrugated metal roofs. To the right of these buildings is a large pile of light-colored material, possibly wood chips or mulch. In the middle ground, a river flows through the site, with several blue and yellow cranes positioned along its banks. The background shows a residential town with many houses and a few larger buildings, including a church spire. The sky is clear and blue.

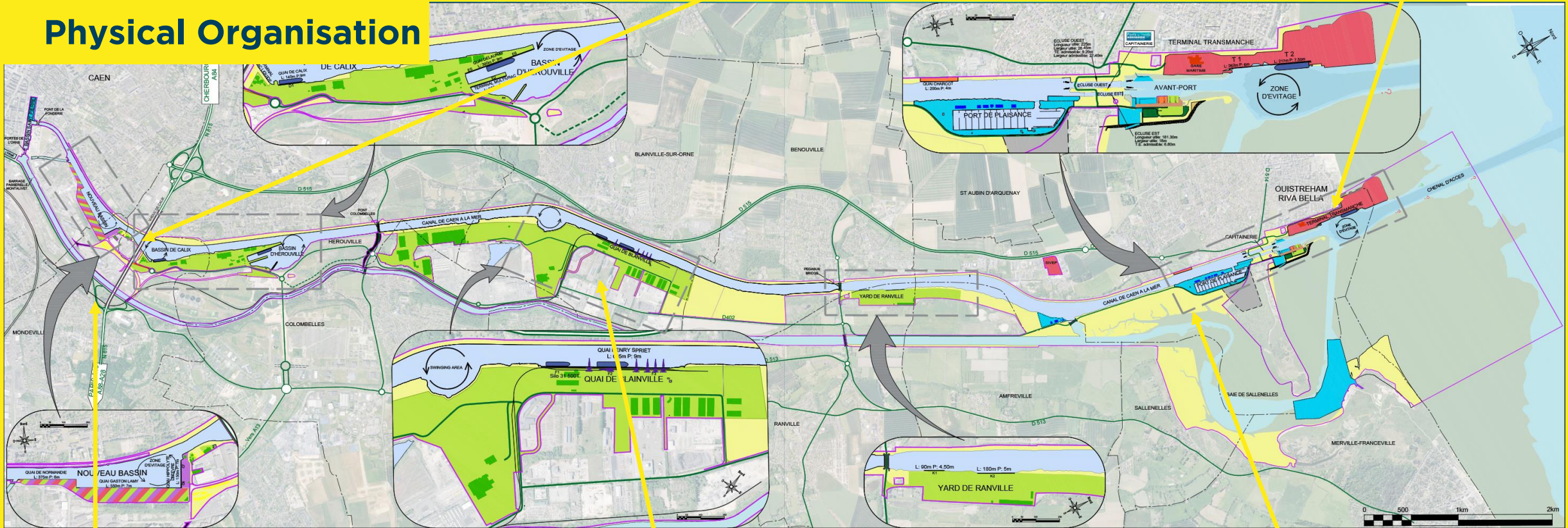
CAEN - OUISTREHAM

Physical organisation

Calix + Hérrouville docks:
bulk and breakbulk activities: 10HA

Ouistreham ferry terminal: 12HA

Physical Organisation



Cruise ship wharf

Blainville docks:
bulk and breakbulk activities: 25HA

Marina: 650 berths

Maritime Access

Locks can accomodate vessels up to 26m wide

Locks are open 16/24h on average

Depth in the canal and alongside Blainville & Calix wharfs: 8 to 9m

Quays about 60 min. from the locks

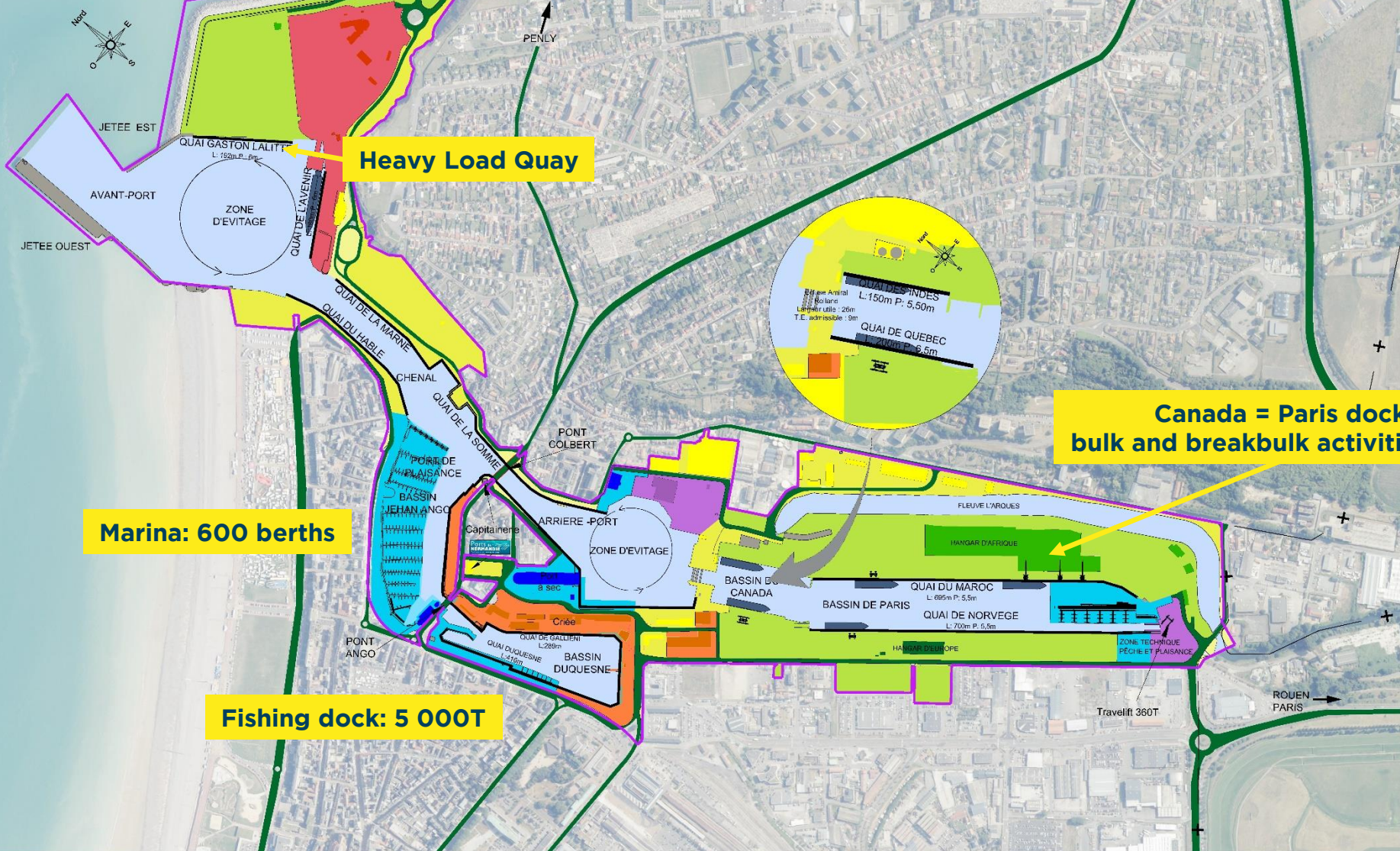




DIEPPE

Physical Organisation

Ferry terminal: 5HA



Heavy Load Quay

Marina: 600 berths

Fishing dock: 5 000T

Canada = Paris dock:
bulk and breakbulk activities: 7HA

Maritime Access

OUTER PORT

Gaston Lalitte quay: 6m depth min, 120m length

RORO Linkspan: 6m depth min. 6m wide, 135t, can be used outside ferry times

INNER PORT

Locks can accommodate vessels up to 24m wide

Max. vessel length: 145m

Locks open 90 min. before and after high water

Depth in dock: up to 8.5m



Business Environnement



**2 major activities in
Cherbourg area:**
Energy and Steel production
Large quantities of
aggregates available near
Cherbourg,
and Caen-Ouistreham

Already using our services

GE, LMWP blades 2017

Production and storage of Halliade X, one of the world's longest turbine blades

CMN/Hydroquest Paimpol-Bréhat 2019 - 2021

Loading/unloading and storage of a marine turbine and its foundations

Van Oord: Saint-Brieuc 2021-2023

Pin piles marshalling port

Boskalis: Fécamp 2022

Storage of quarry materials, scour protection system

Asso.Subsea Various OWF 2022-2025

Inter Array cable protection

SAIPEM: Courseulles 2022-2025

Seabed Preparation

EDF/SGRE: Fécamp 2023-2024

Assembly hub

DEME: Le Tréport 2024-2025

Pin piles & jackets marshalling port

EDF: Courseulles 2022-2042

Maintenance base

OW: Le Tréport 2025-2045

Maintenance base

Already using
our services



Already using
our services



Already using
our services



Already using
our services



Already using
our services



Ports of **NORMANDY**

Caen-Ouistreham /// Cherbourg /// Dieppe

PLUG IN HERE
PLAY OFFSHORE

<https://portsdenormandie.fr/en/sectors/marine-renewable-energies>